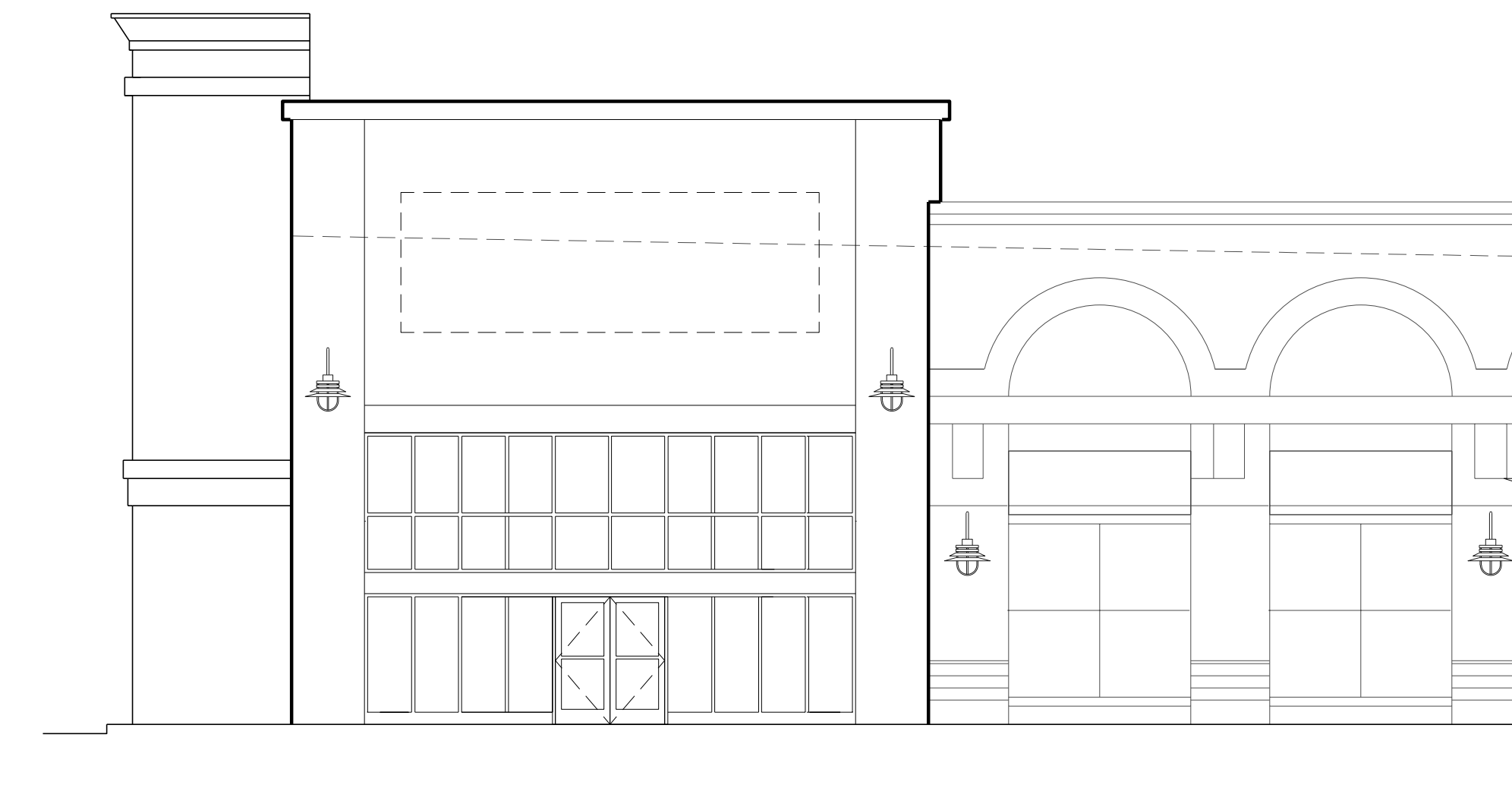


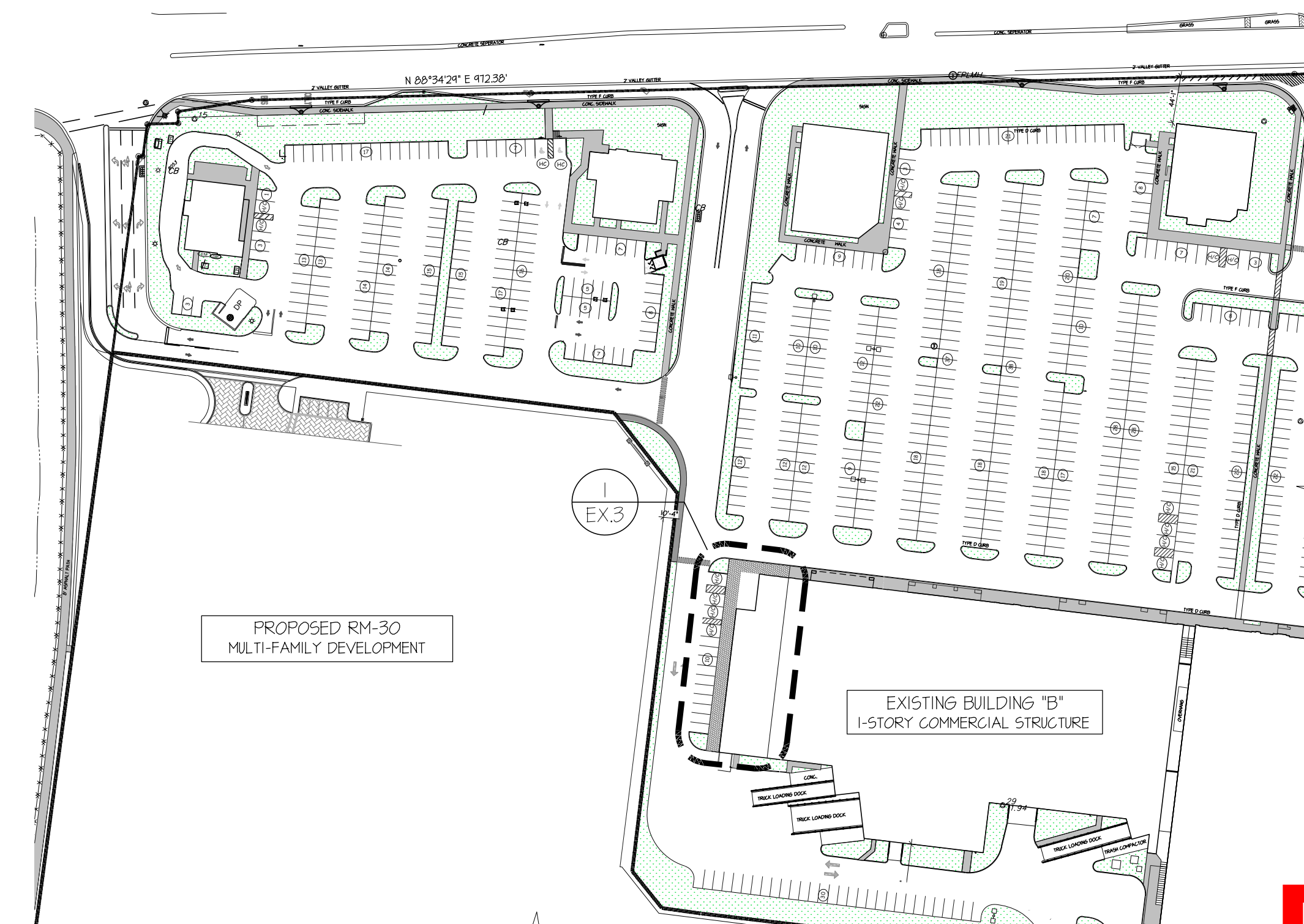
PARTIAL FRONT ELEVATION - RETAIL B-1A

SCALE: 1/8" = 1'-0"



PARTIAL SIDE ELEVATION - RETAIL B-1A

SCALE: 1/8" = 1'-0"



ENLARGED KEY PLAN

SCALE: N.T.S.

P&Z

PZ21-13000008
06/28/2023

EX.3

MODIFICATIONS OF APPROVED
MASTER SITE PLAN AT
POMPANO CITI CENTRE
POMPANO BEACH, FL

SALTZ
MICHELSON
ARCHITECTS

3501 Griffin Road
Ft. Lauderdale, FL 33312
(954) 266-2700 Fx: (954) 266-2701
sma@saltzmichelson.com

AA-0002897

STATE OF FLORIDA
REGISTERED ARCHITECT
CHARLES MICHELSON
AR9976

Charles Michelson AR0009976

Project No.:
2021-121
Drawn By:
VM/SF
Checked By:
MA
Date:
09/02/2022
REVISIONS